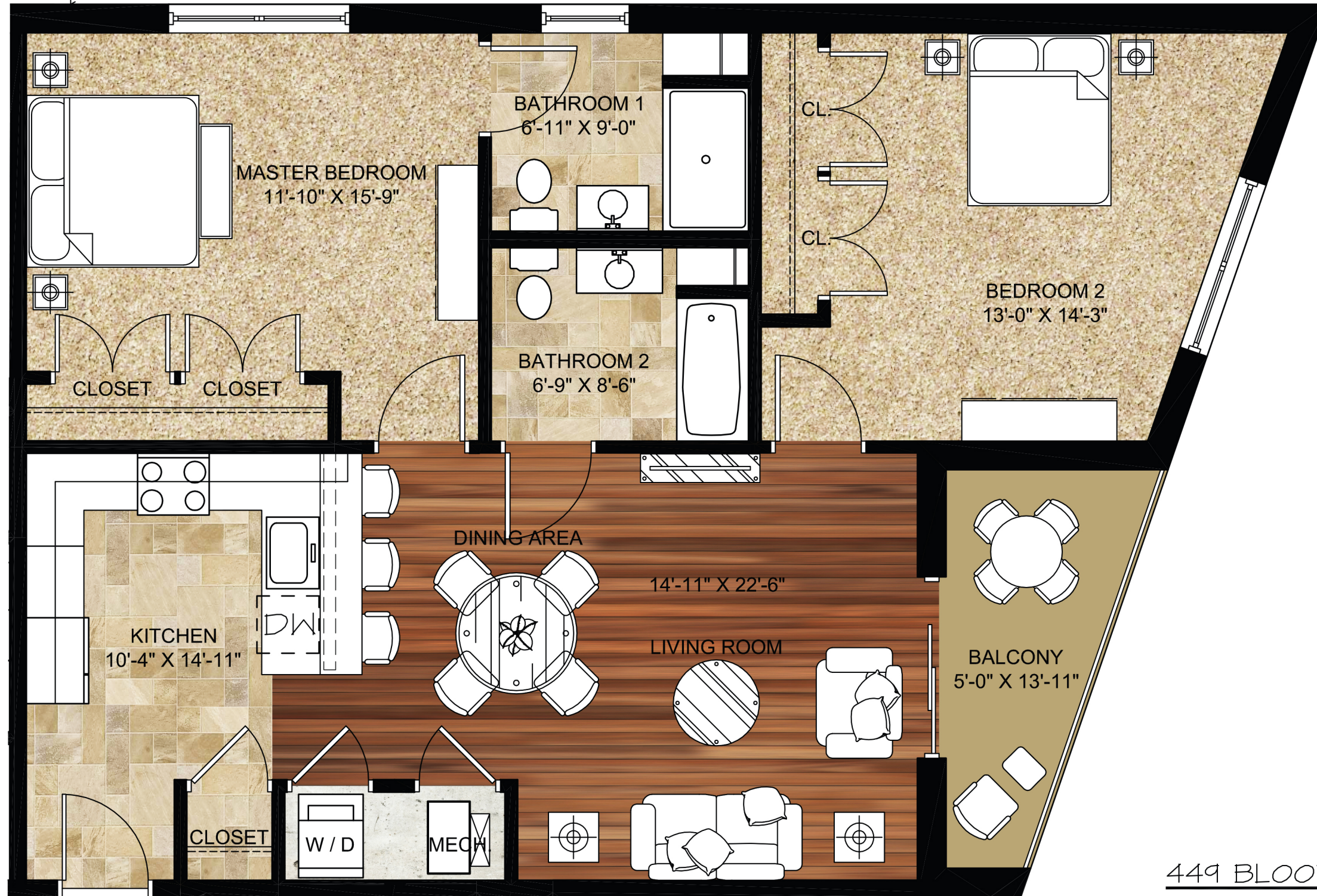
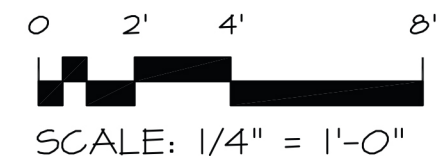


APARTMENT W-202 & W-302

- 2 Bedroom; 2 Bath
- 1,069 Sq. Ft.



449 BLOOMFIELD



Jarmel Kizel

ARCHITECTS AND ENGINEERS INC.

42 OKNER PARKWAY
LIVINGSTON, NEW JERSEY 07039
TEL: 973-994-9669
FAX: 973-994-4069

www.jarmelkizel.com

Architecture
Engineering
Interior Design
Implementation Services

PRINCIPALS

MATTHEW B. JARMEI, AIA, MBA NJ LIC A10-12787
AZ LIC 48159 MI LIC 1301052189
CO LIC ARC-401483 MN LIC 46404
DC LIC ARC101849 NC LIC 10120
DE LIC 55-0007256 NH LIC 3501
FL LIC AR94034 NY LIC 024673
GA LIC RA011484 OH LIC A-99-12444
IA LIC 05577 PA LIC RA-014851-B
IL LIC 001.020069 TN LIC 103850
MA LIC ART0286 TX LIC 20992
MD LIC 12662 VA LIC 0401 014089
VT LIC 2453

IRWIN H. KIZEL, AIA, PP NJ LIC 21A100794700
CT LIC 08522 NJ PP LIC 33100243100
RICHARD A. JARMEI, PE NJ LIC 37491
CT LIC PEN0027735 MN LIC 47482
FL LIC 70134 NY LIC 073898-1
MI LIC 6201052339 PA LIC PE070600
DE LIC 18754 MA LIC 50445
VT LIC 88498

ASSOCIATES

RONALD A. BROKENSHERE, PE NJ LIC GF45511
DAVID L. LESENE, RA NJ LIC A1 13231
NY LIC 024719
PA LIC RA-405081
CT LIC ARI-0011748
MA LIC 31425

MICHAEL J. VORLAND, RA NY LIC 036993
GERARD P. GESARIO, PE NJ LIC GE038255
FREDRICK KINCAID, RA NJ LIC 21A1018294

NJ State Board Of Architects Authorization No. 161
NJ State Board Of Engineers & Land Surveyors Authorization No. GA-278177

Project:
**VERONA MULTI-FAMILY
BLOOMFIELD AVE. & VERONA PLACE
VERONA, NEW JERSEY**

Project Number: **DEMAT-S-13-157** Scale: **1/4" = 1'-0"**

Drawn By: **FAA** Approved By: **MBJ**

Drawing Name:
**PARTIAL FLOOR PLAN
UNIT: W-202 & W-302**

Drawing Number:
MP-2

Initial Date: **12/15/15**

H:\DRAWINGS\VERONA MULTI-FAMILY\MARKETING FLOOR PLANS\WITHOUT FURNITURE\DEMAT-S-13-157-MARKETING FLOOR PLANS FOR 449 BLOOMFIELD AVE.DWG PLOTTED: 12/23/2015 FALMEYDA