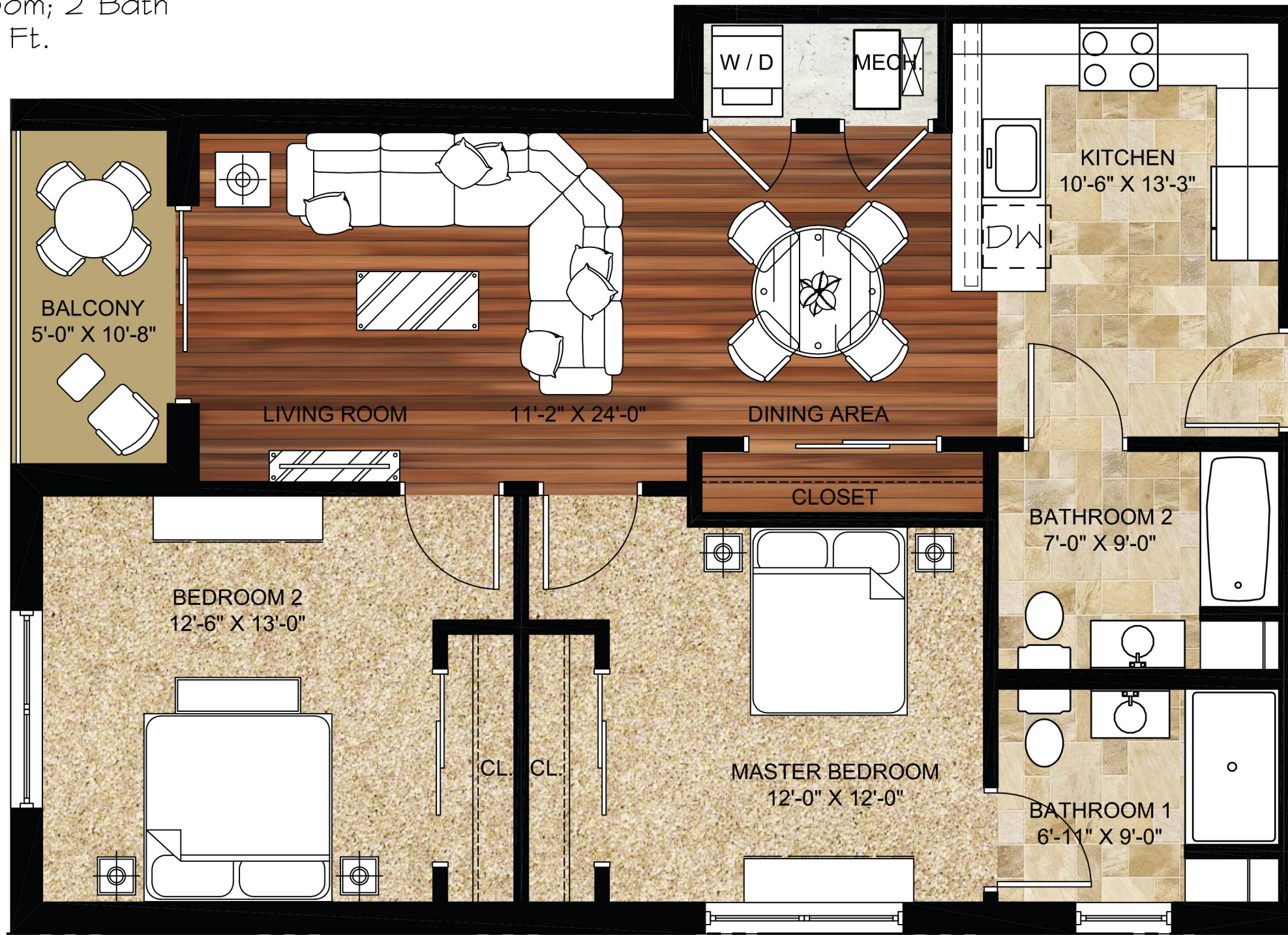
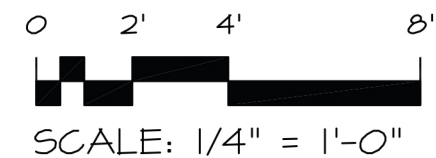


APARTMENT W-205 & W-305

- 2 Bedroom; 2 Bath
- 986 Sq. Ft.



449 BLOOMFIELD



Jarmel Kizel

ARCHITECTS AND ENGINEERS INC.

42 OKNER PARKWAY
LIVINGSTON, NEW JERSEY 07039
TEL: 973-994-9669
FAX: 973-994-4069

www.jarmelkizel.com

Architecture
Engineering
Interior Design
Implementation Services

PRINCIPALS	
MATTHEW B. JARMEL, AIA, MBA	NJ LIC AIO-12787
AZ LIC 48159	MI LIC 1301052189
CO LIC ARC-401483	MN LIC 46404
DC LIC ARC101849	NC LIC 10120
DE LIC 55-0007256	NH LIC 3501
FL LIC AR94034	NY LIC 024673
GA LIC RA011484	OH LIC A-99-12444
IA LIC 05577	PA LIC RA-014851-B
IL LIC 001.020069	TN LIC 103850
MA LIC ART0286	TX LIC 20992
MD LIC 12662	VA LIC 0401 014089
	VT LIC 2453
IRWIN H. KIZEL, AIA, PP	NJ LIC 21A100794700
CT LIC 08522	NJ PP LIC 33U00243100
RICHARD A. JARMEL, PE	NJ LIC 37491
CT LIC PEN0027735	MN LIC 47482
FL LIC 70134	NY LIC 073898-1
MI LIC 6201052339	PA LIC PE070600
DE LIC 18754	MA LIC 50445
VT LIC 88498	
ASSOCIATES	
RONALD A. BROKENSHIRE, PE	NJ LIC GE45511
DAVID L. LESESNE, RA	NJ LIC AI 13231
	NY LIC 024719
	PA LIC RA-405081
	CT LIC ARI-0011748
	MA LIC 31425
MICHAEL J. VORLAND, RA	NY LIC 036993
GERARD P. GESARIO, PE	NJ LIC GE038255
FREDRICK KINCAID, RA	NJ LIC 21A1018294
NJ State Board Of Architects Authorization No. 161	
NJ State Board Of Engineers & Land Surveyors Authorization No. GA-278177	

Project:
**VERONA MULTI-FAMILY
BLOOMFIELD AVE. & VERONA PLACE
VERONA, NEW JERSEY**

Project Number:
DEMAT-S-13-157

Scale:
1/4" = 1'-0"

Drawn By:
FAA

Approved By:
MBJ

Drawing Name:
**PARTIAL FLOOR PLAN
UNIT: W-205 & W-305**

Drawing Number:
MP-5

Initial Date: **12/15/15**