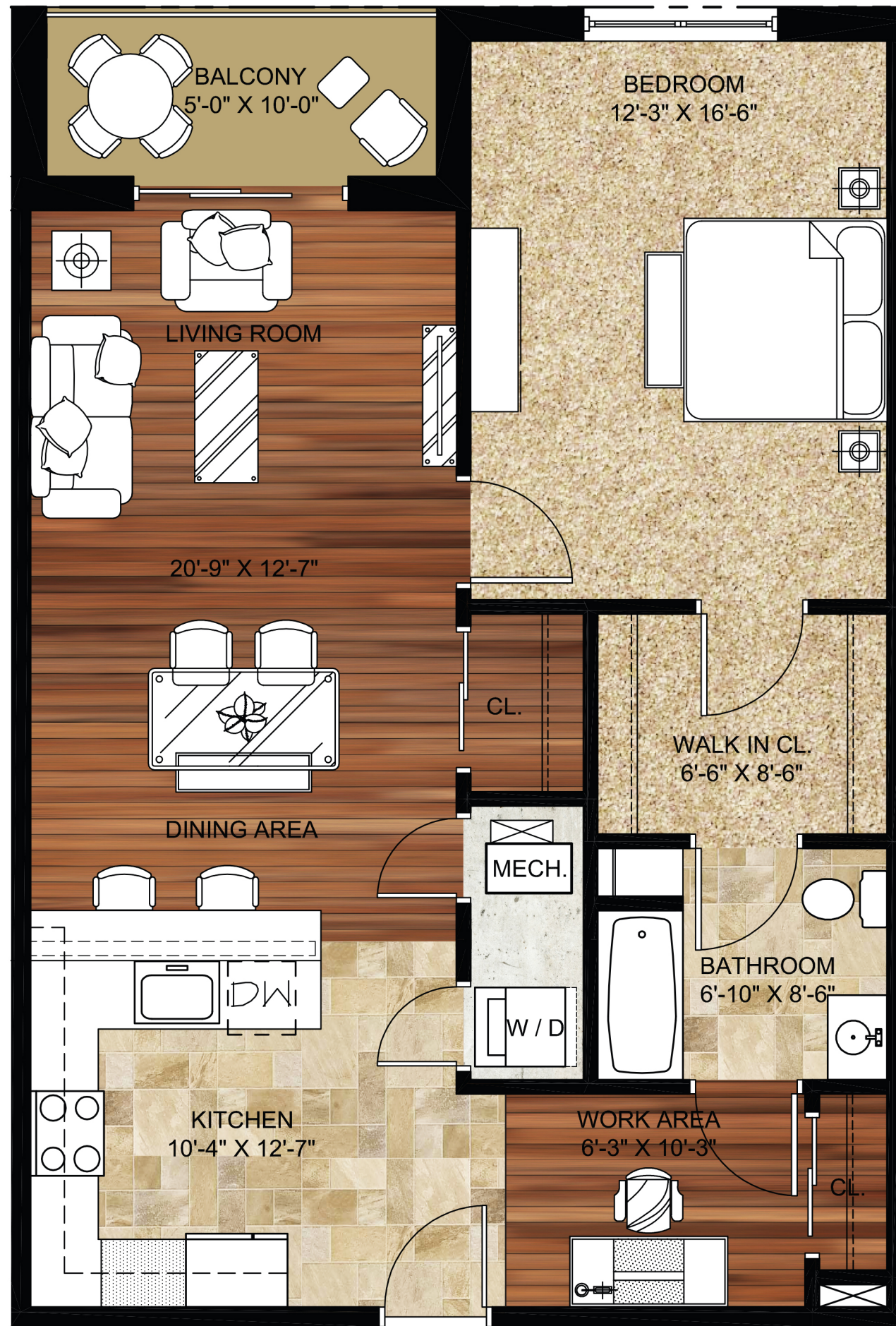


APARTMENT E-205 & E-305

- 1 Bedroom; 1 Bath
- Work Area
- 880 Sq. Ft.



435 BLOOMFIELD



SCALE: 1/4" = 1'-0"



Jarmel Kizel

ARCHITECTS AND ENGINEERS INC.

42 OKNER PARKWAY
LIVINGSTON, NEW JERSEY 07039
TEL: 973-994-9669
FAX: 973-994-4069

www.jarmelkizel.com

Architecture
Engineering
Interior Design
Implementation Services

PRINCIPALS

MATTHEW B. JARMEL, AIA, MBA

NJ LIC A10-12787
MI LIC 1301052189
CO LIC ARC-401483
MN LIC 46404
DC LIC ARC101849
NC LIC 10120
DE LIC S5-0007256
NH LIC 3501
FL LIC AR94034
NY LIC 024673
GA LIC RA011484
OH LIC A-99-12444
IA LIC 05577
PA LIC RA-014851-B
IL LIC 001.020069
TN LIC 103850
MA LIC ART0286
TX LIC 20992
MD LIC 12662
VA LIC 0401 014089
VT LIC 2453

IRWIN H. KIZEL, AIA, PP

NJ LIC 21A100794700
CT LIC 08522
NJ PP LIC 33I00243100

RICHARD A. JARMEL, PE

NJ LIC 37491
CT LIC PEN0027735
MN LIC 47482
FL LIC 70134
NY LIC 073898-1
MI LIC 6201052339
PA LIC PE070600
DE LIC 18754
MA LIC 50445
VT LIC 88498

ASSOCIATES

RONALD A. BROKENSHERE, PE

NJ LIC GF45511

DAVID L. LESENE, RA

NJ LIC A1 13231
NY LIC 024719
PA LIC RA-405081
CT LIC ARI-0011748
MA LIC 31425

MICHAEL J. VORLAND, RA

NY LIC 036993

GERARD P. GESARIO, PE

NJ LIC GE038255

FREDRICK KINCAID, RA

NJ LIC 21A1018294

NJ State Board Of Architects Authorization No. 161
NJ State Board Of Engineers & Land Surveyors Authorization No. GA-278177

Project:

**VERONA MULTI-FAMILY
BLOOMFIELD AVE. & VERONA PLACE
VERONA, NEW JERSEY**

Project Number:

DEMAT-S-13-157

Scale:

1/4" = 1'-0"

Drawn By:

FAA

Approved By:

MBJ

Drawing Name:

**PARTIAL FLOOR PLAN
UNIT: E-205 & E-305**

Drawing Number:

MP-5

Initial Date: **12/15/15**

H:\DRAWINGS\VERONA MULTI-FAMILY\MARKETING FLOOR PLANS\PLANS WITHOUT FURNITURE\DEMAT-S-13-157-MARKETING FLOOR PLANS FOR 435 BLOOMFIELD AVE.DWG FALMEYDA PLOTTED: 12/23/2015